



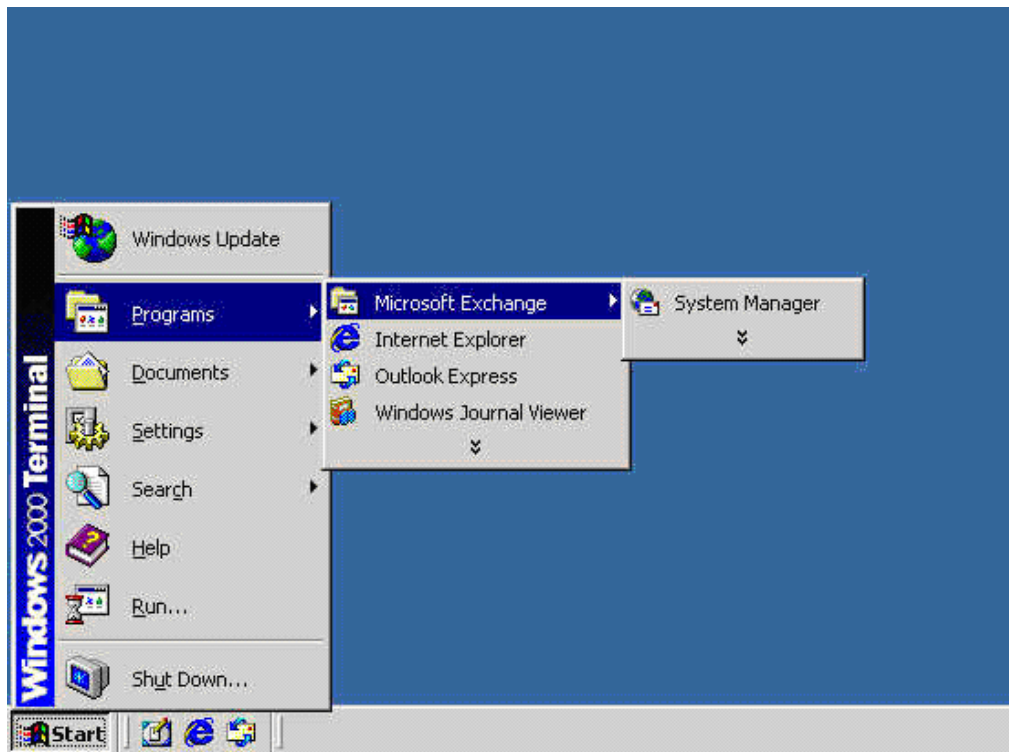
How to change incoming SMTP port for:

**Microsoft Exchange
Version 5.5, 2000 & 2003**

April, 2005

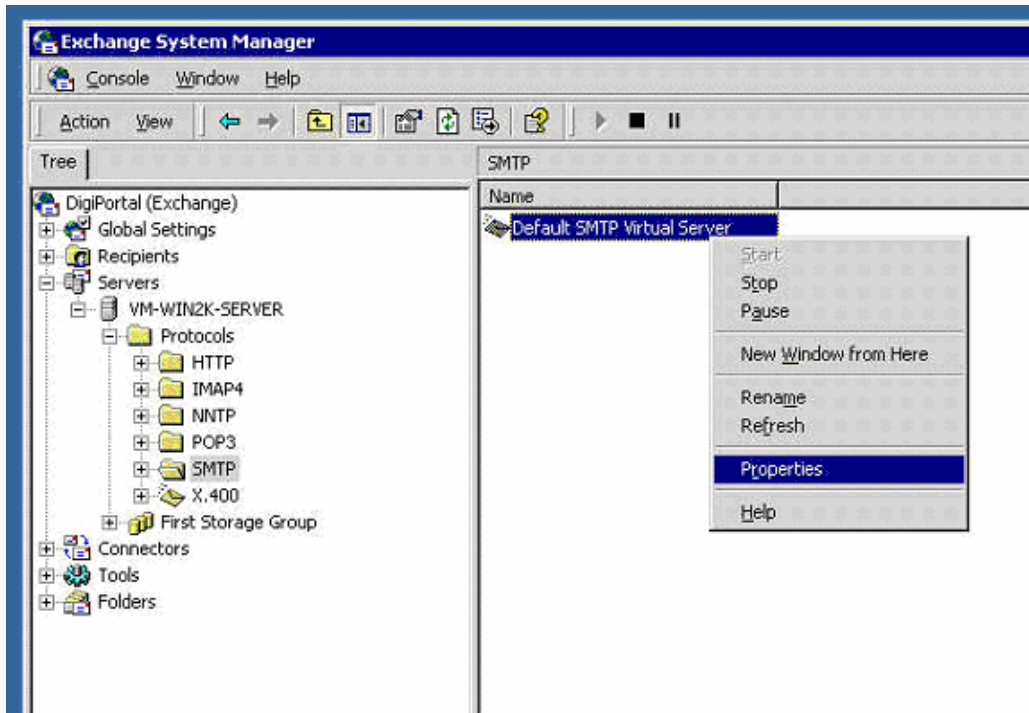
Changing ports in Microsoft Exchange 2000 & 2003 Mail Servers

1. You will need to access your Microsoft Exchange System Manager.



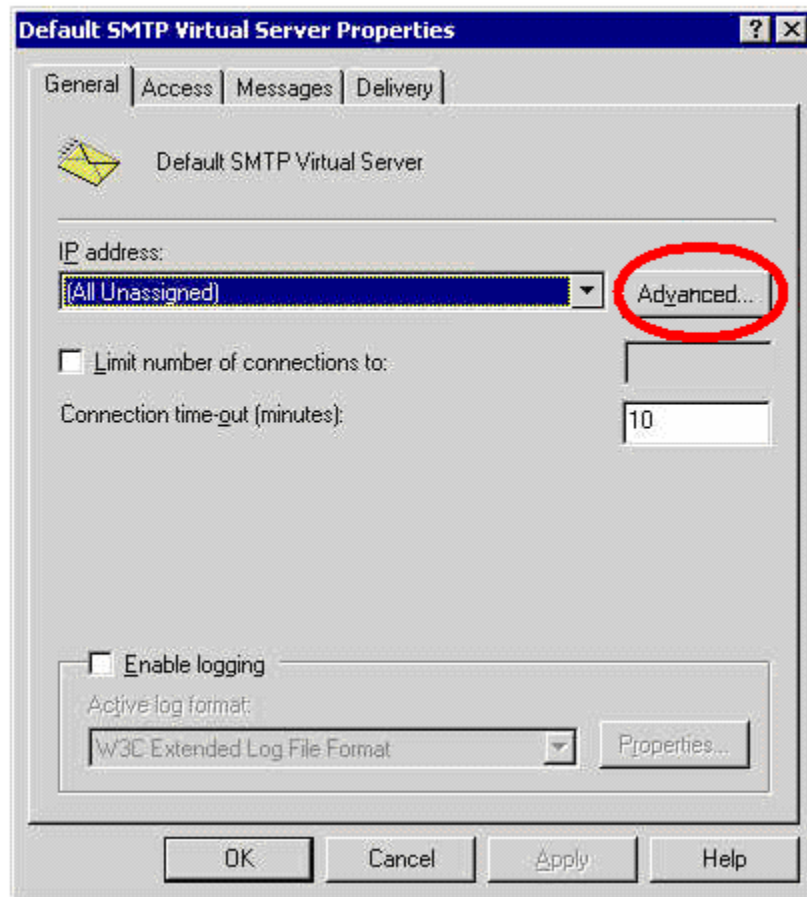
2. Exchange System Manager:

- A. Expand Servers and click on your mail server
- B. Expand Protocols
- C. Click on SMTP
- D. Right click on Default SMTP Virtual Server
- E. Click on Properties

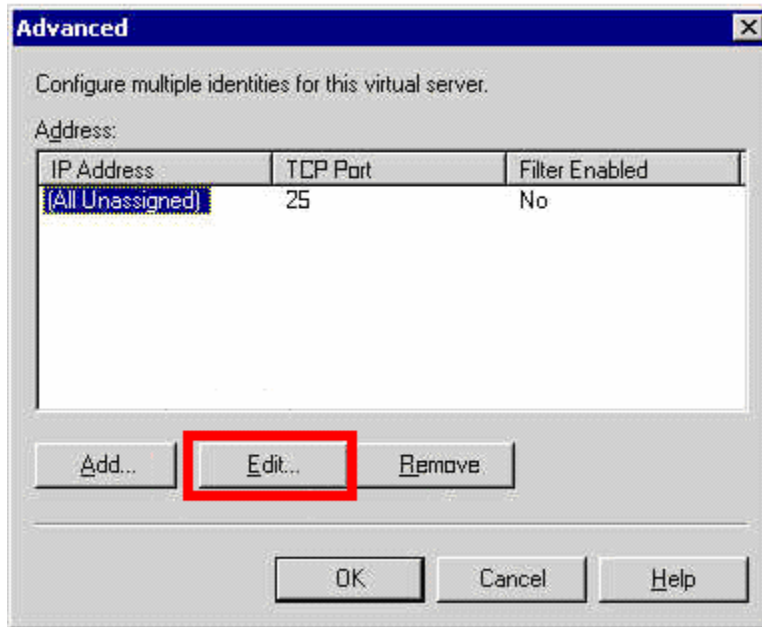


3. General Tab:

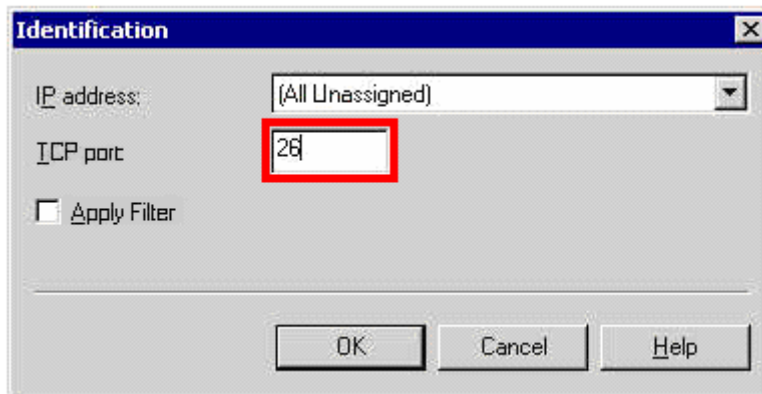
- A. Click on the Advanced button



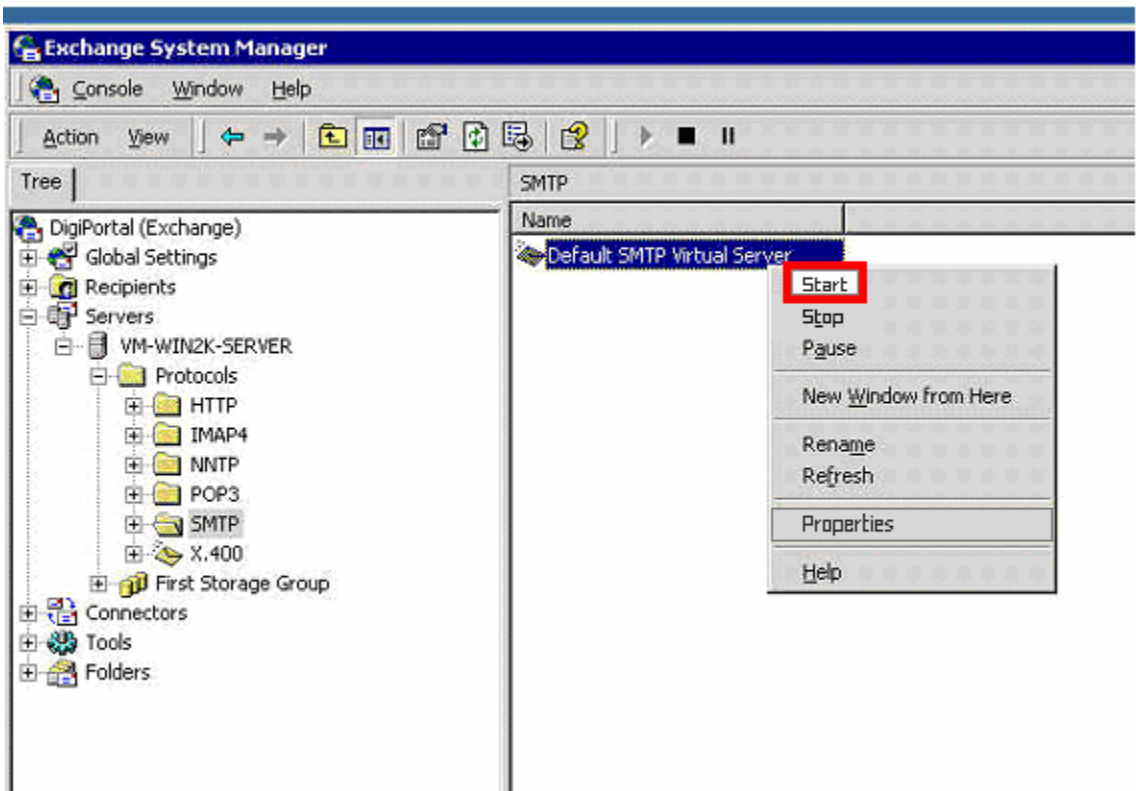
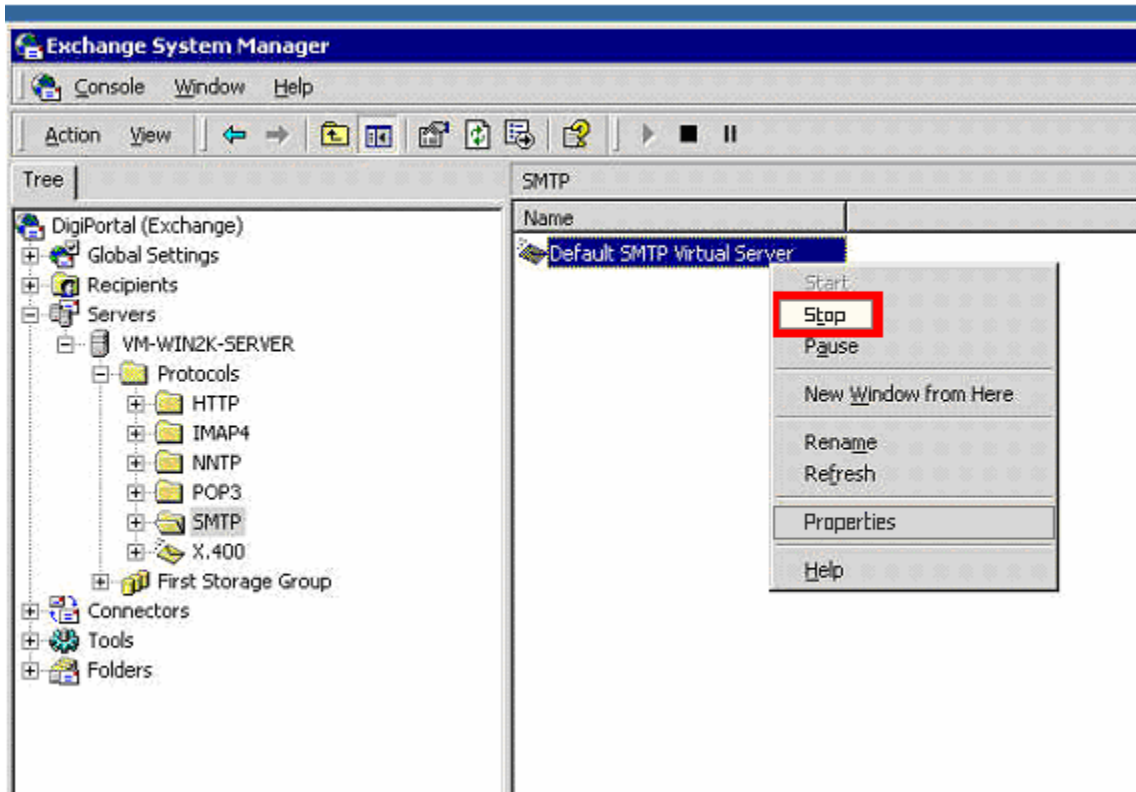
B. Click on the Edit button



C. Change the TCP Port to 26 and click OK and OK again.



4. You will need to Stop and then Start the Default SMTP virtual server by accessing your Microsoft Exchange System Manager.

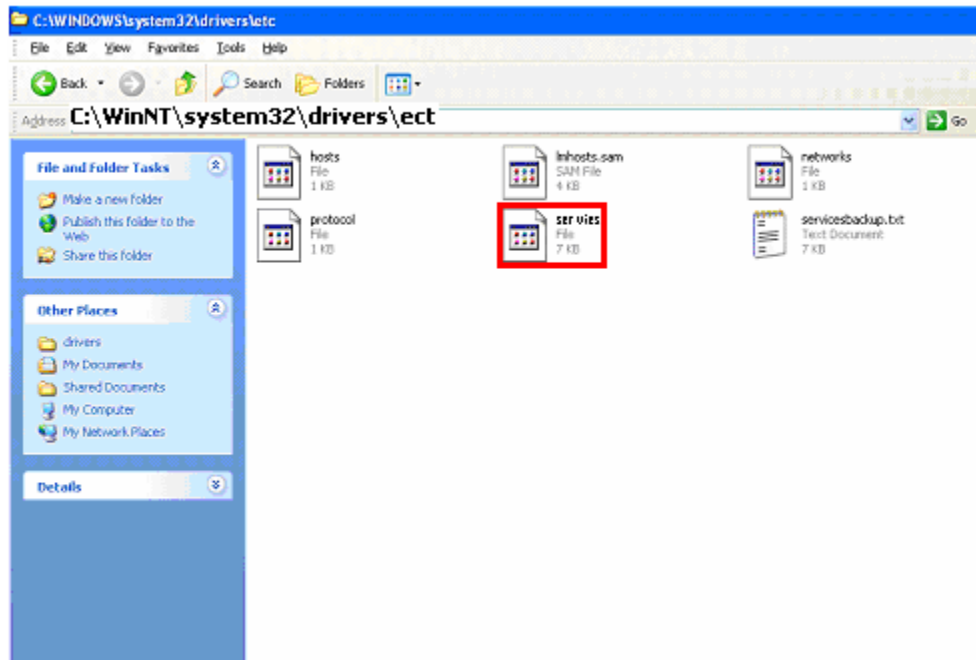


5. Your Exchange server will now listen on port 26 for incoming mail. ChoiceMail should be configured to forward valid messages to this port.

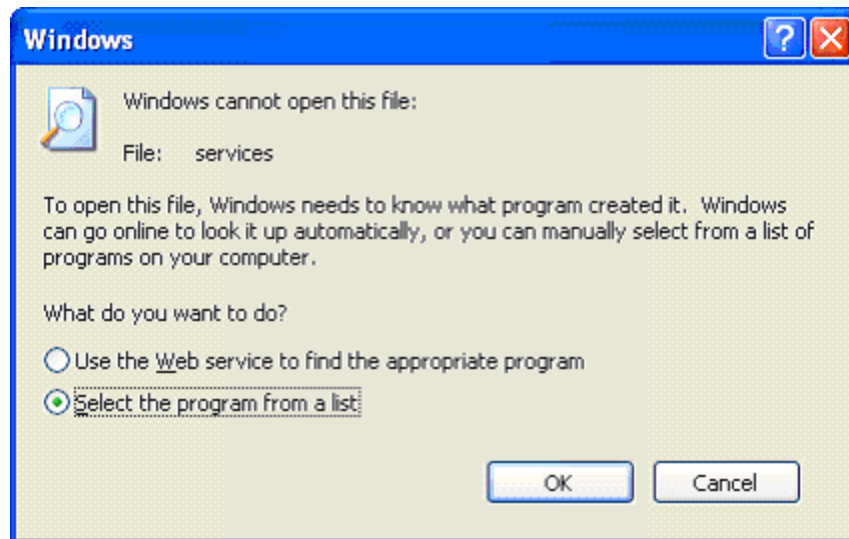
Changing ports in Microsoft Exchange 5.5 Mail Server

6. You will need to change the port Exchange is listening on from 25 to 26.
 - A. Double click on your C: drive
 - B. Double click on WinNT
 - C. Double click on System 32
 - D. Double click on Drivers
 - E. Double click on etc
 - F. Double click on Services

Screen 1

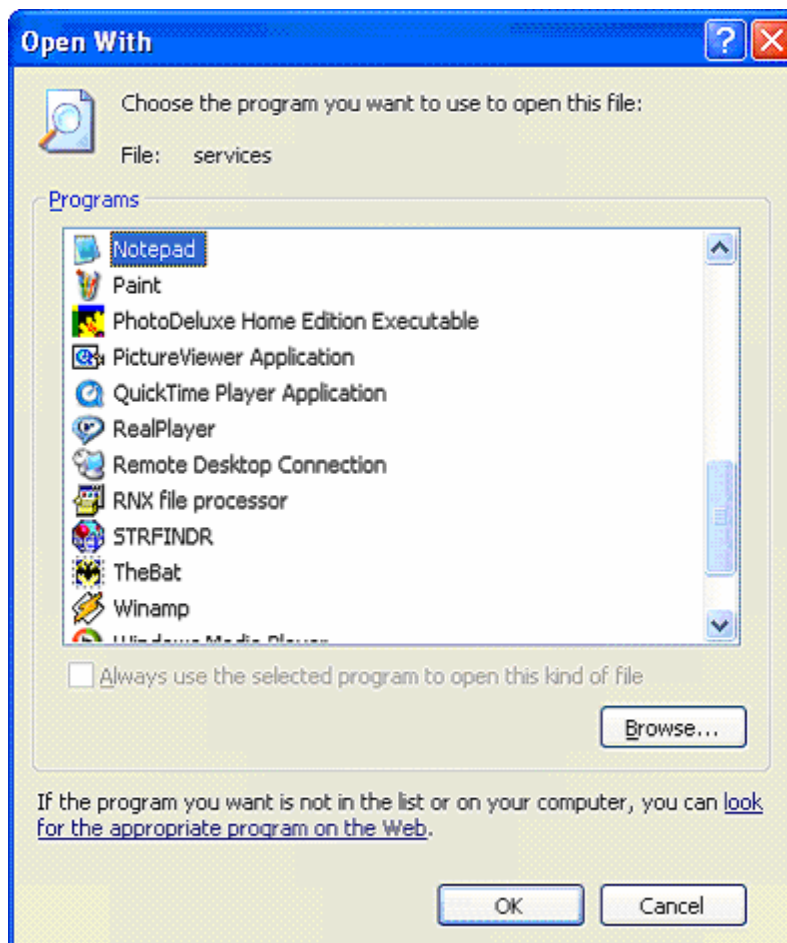


Screen 2



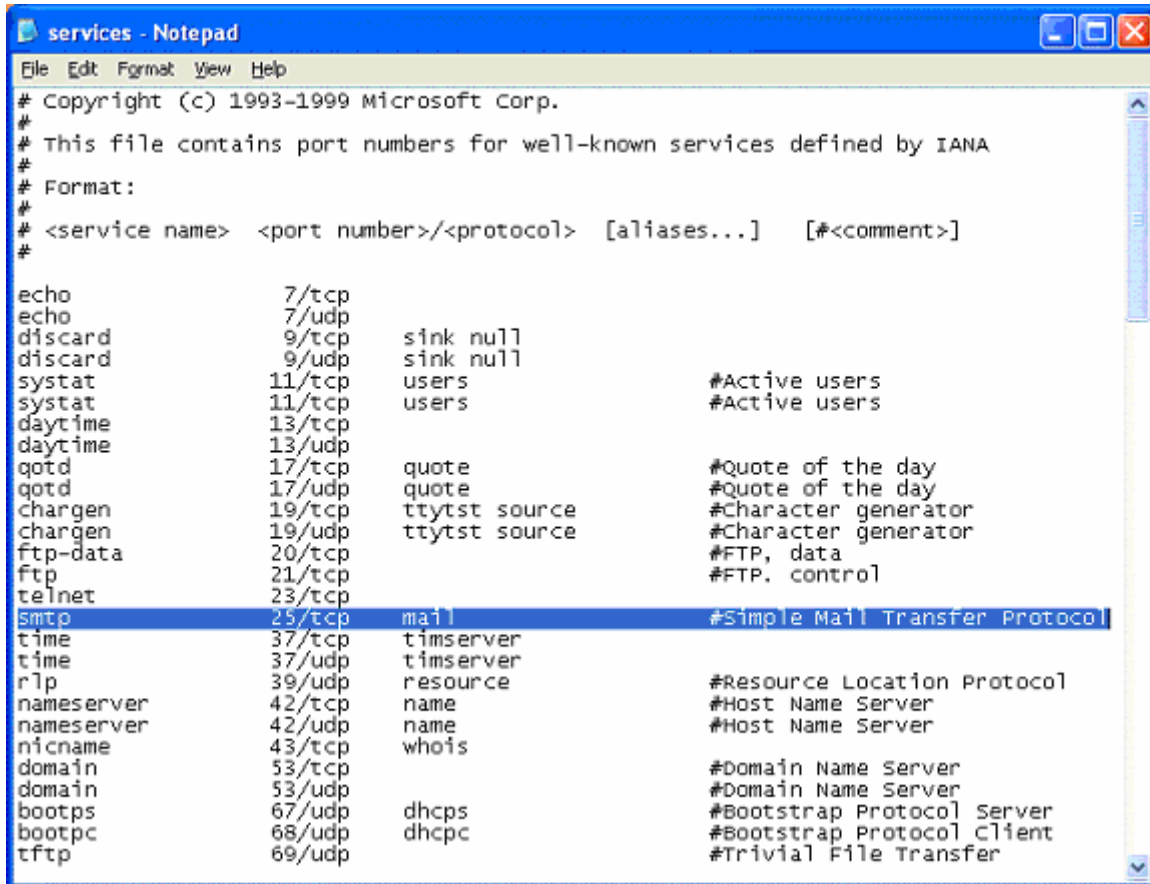
- G. Windows may tell you that it can not open this file, when asked what to do, choose 'Select the program from a list'

Screen 3



- H. Choose Notepad from the list and click OK

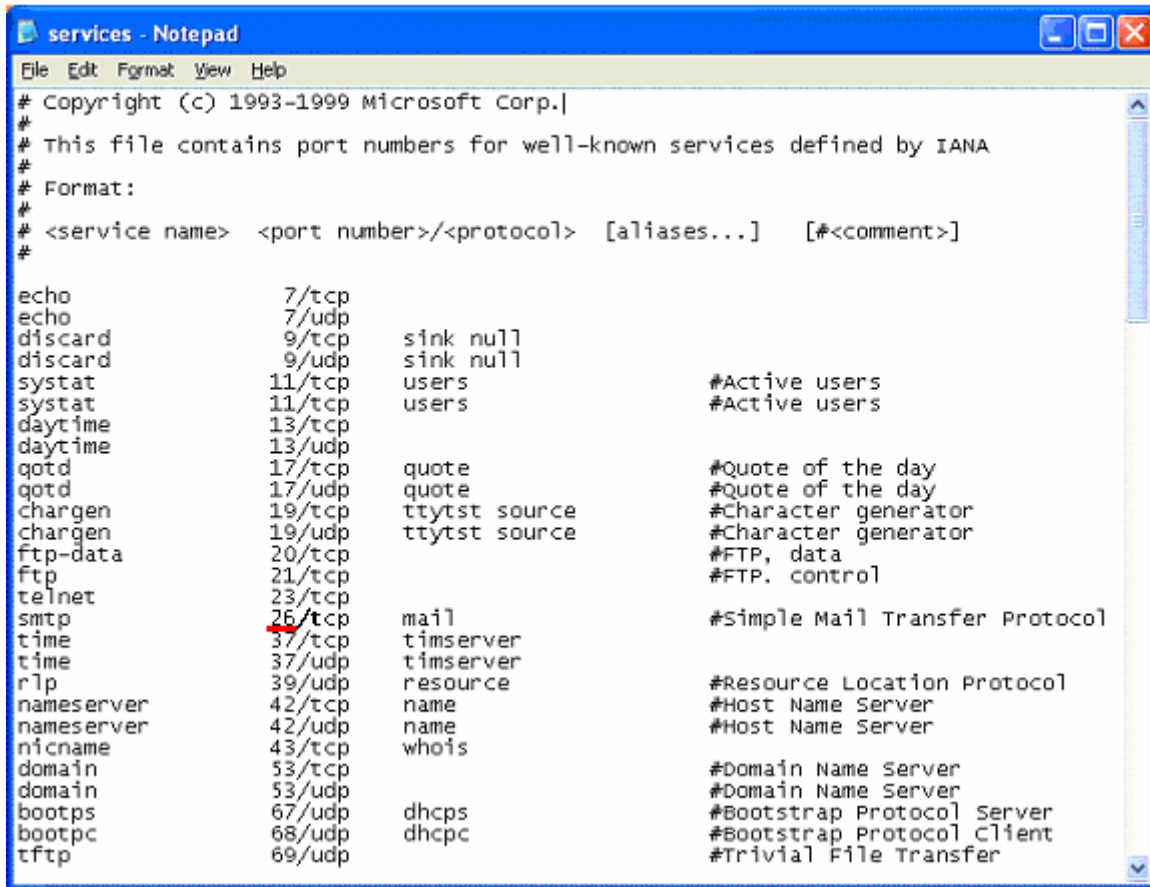
Screen 4



```
services - Notepad
File Edit Format View Help
# Copyright (c) 1993-1999 Microsoft Corp.
#
# This file contains port numbers for well-known services defined by IANA
#
# Format:
# <service name> <port number>/<protocol> [aliases...] [#<comment>]
#
echo          7/tcp
echo          7/udp
discard      9/tcp      sink null
discard      9/udp      sink null
sysstat      11/tcp     users      #Active users
sysstat      11/tcp     users      #Active users
daytime      13/tcp
daytime      13/udp
qotd         17/tcp     quote     #Quote of the day
qotd         17/udp     quote     #Quote of the day
chargen      19/tcp     ttytst source #Character generator
chargen      19/udp     ttytst source #Character generator
ftp-data     20/tcp
ftp          21/tcp
telnet       23/tcp
smtp         25/tcp     mail      #Simple Mail Transfer Protocol
time         37/tcp     timserver
time         37/udp     timserver
rtp          39/udp     resource  #Resource Location Protocol
nameserver  42/tcp     name      #Host Name Server
nameserver  42/udp     name      #Host Name Server
nrcname     43/tcp     whois
domain      53/tcp
domain      53/udp
bootps      67/udp     dhcps    #Bootstrap Protocol Server
bootpc      68/udp     dhcps    #Bootstrap Protocol Client
tftp        69/udp
```

- I. You are looking for: smtp 25/tcp mail #Simple Mail Transfer Protocol. Once you locate it change the 25 in 25/tcp to 26.

Screen 5

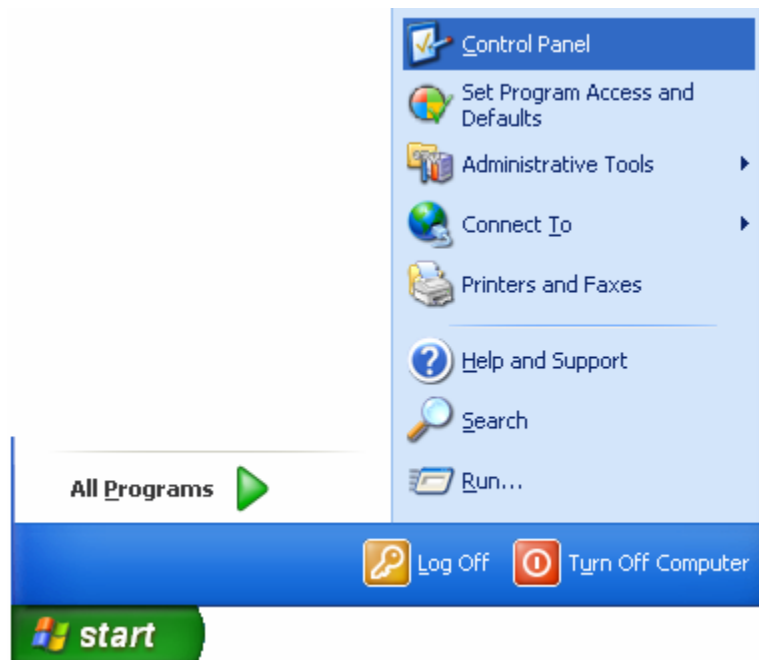


```
# Copyright (c) 1993-1999 Microsoft Corp.
#
# This file contains port numbers for well-known services defined by IANA
#
# Format:
# <service name> <port number>/<protocol> [aliases...] [#<comment>]
#
echo          7/tcp
echo          7/udp
discard      9/tcp      sink null
discard      9/udp      sink null
sysstat      11/tcp      users          #Active users
sysstat      11/udp      users          #Active users
daytime      13/tcp
daytime      13/udp
qotd         17/tcp      quote         #Quote of the day
qotd         17/udp      quote         #Quote of the day
chargen      19/tcp      ttytst source #Character generator
chargen      19/udp      ttytst source #Character generator
ftp-data     20/tcp
ftp          21/tcp
telnet       23/tcp
smtp         25/tcp      mail          #Simple Mail Transfer Protocol
time         37/tcp      timserver
time         37/udp      timserver
rlp          39/udp      resource
nameserver  42/tcp      name          #Host Name Server
nameserver  42/udp      name          #Host Name Server
nicname      43/tcp      whois
domain       53/tcp
domain       53/udp
bootps       67/udp
bootpc       68/udp      dhcps
tftp         69/udp      dhcps         #Trivial File Transfer
```

- J. Once you have made the change:
- i. Click on File
 - ii. Click on Save
 - iii. Close out of your C: drive

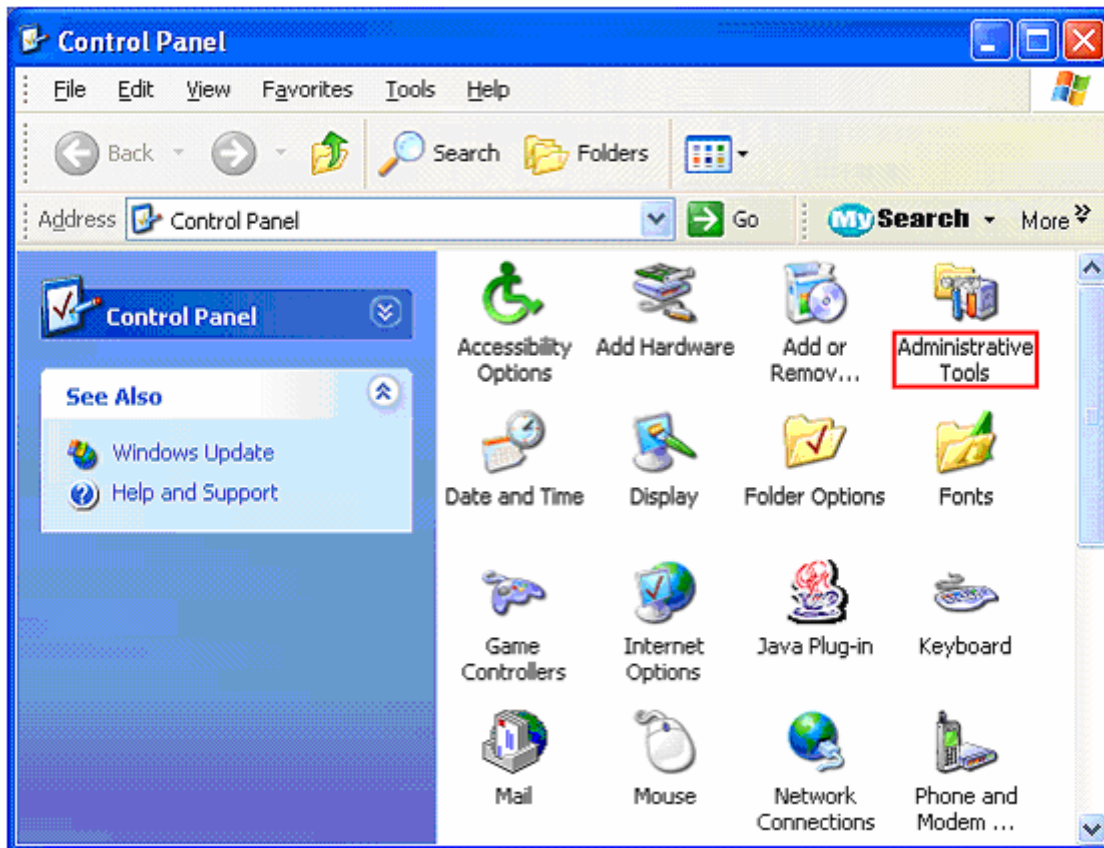
2. You now must stop and restart 'Microsoft Exchange Internet Mail Services.'

Screen 6



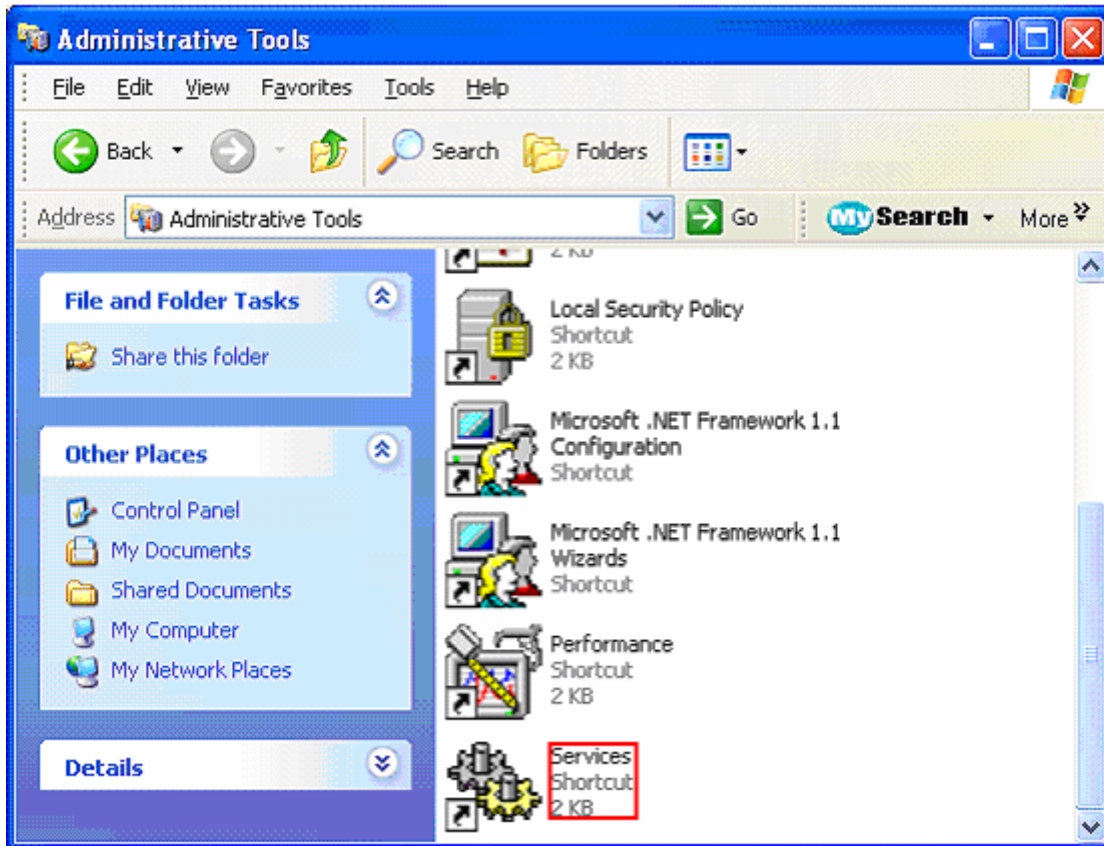
- A. Click on Start Menu
- B. Click on Control Panel

Screen 7



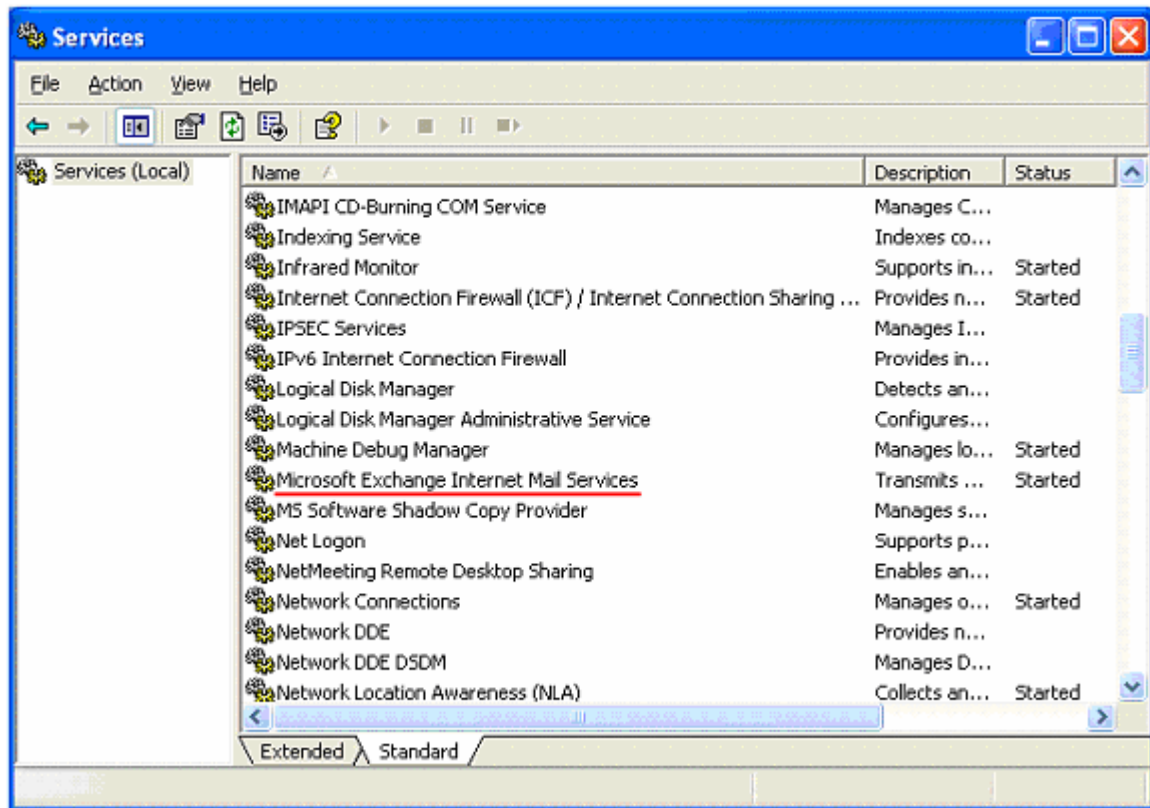
C. Double Click on Administrative Tools

Screen 8



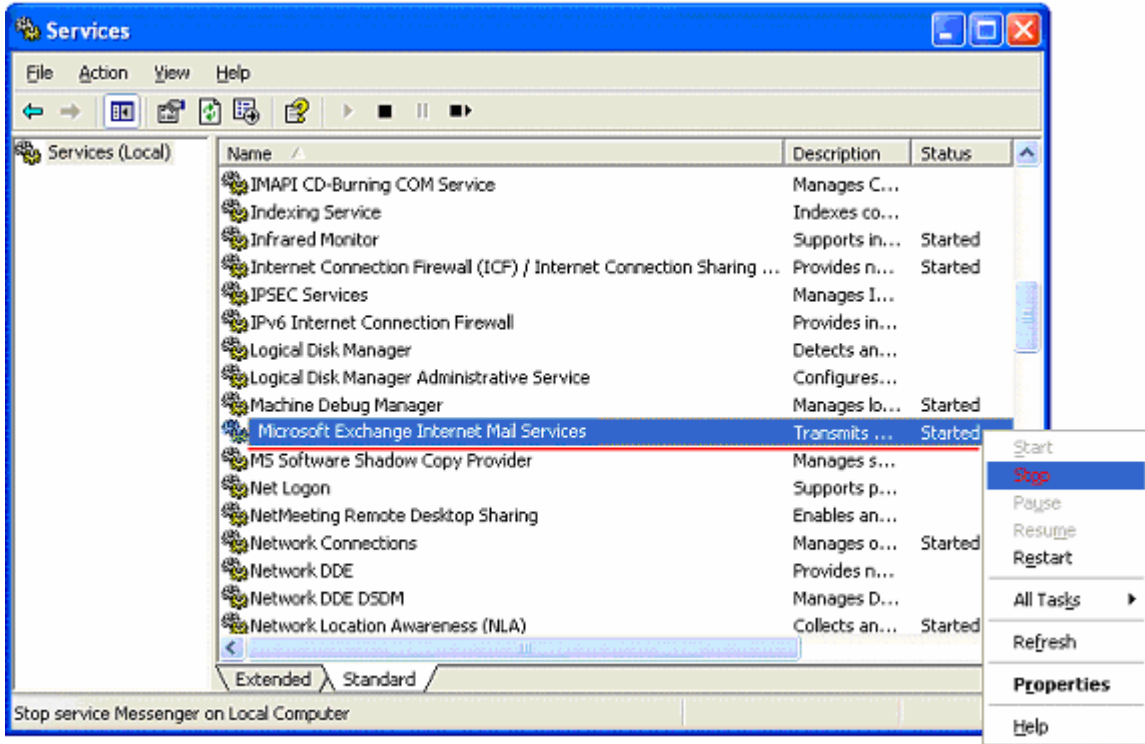
D. Double click on Services

Screen 9



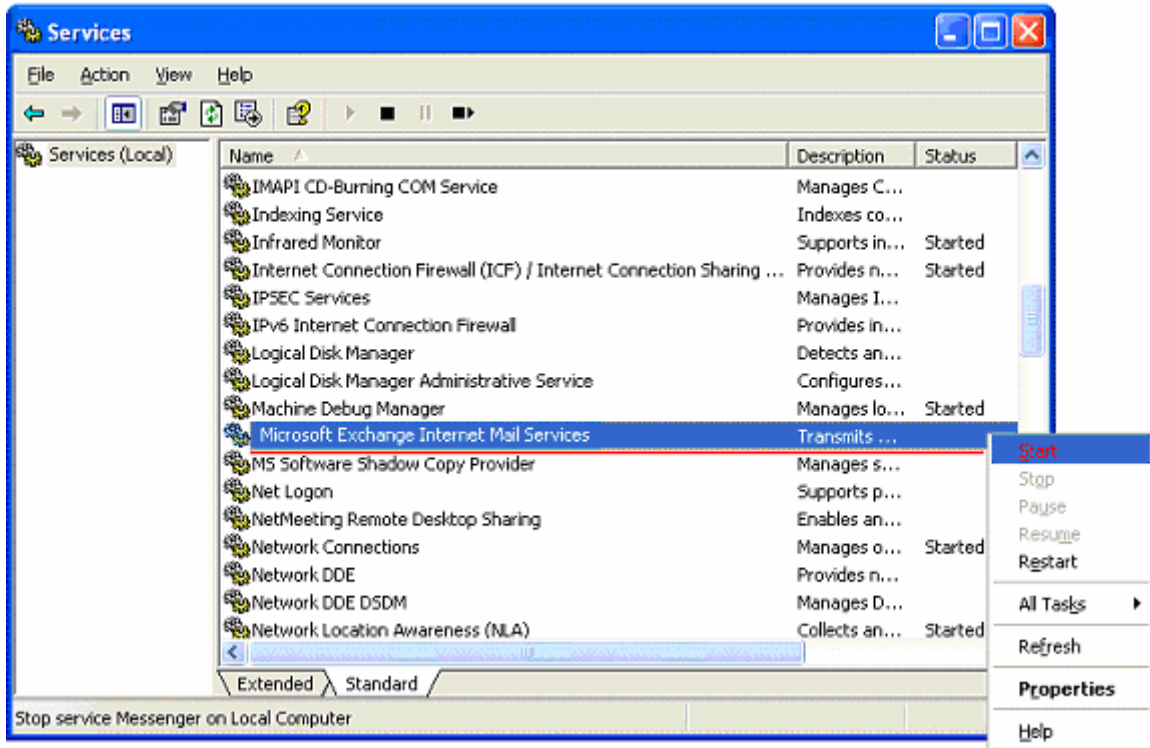
E. Locate 'Microsoft Exchange Internet Mail Services.'

Screen 10




F. Right click on it and Choose Stop

Screen 11



G. Once stopped right click on it and choose Start

3. You are now ready to start both ChoiceMail Servers by clicking on the  button for each server.