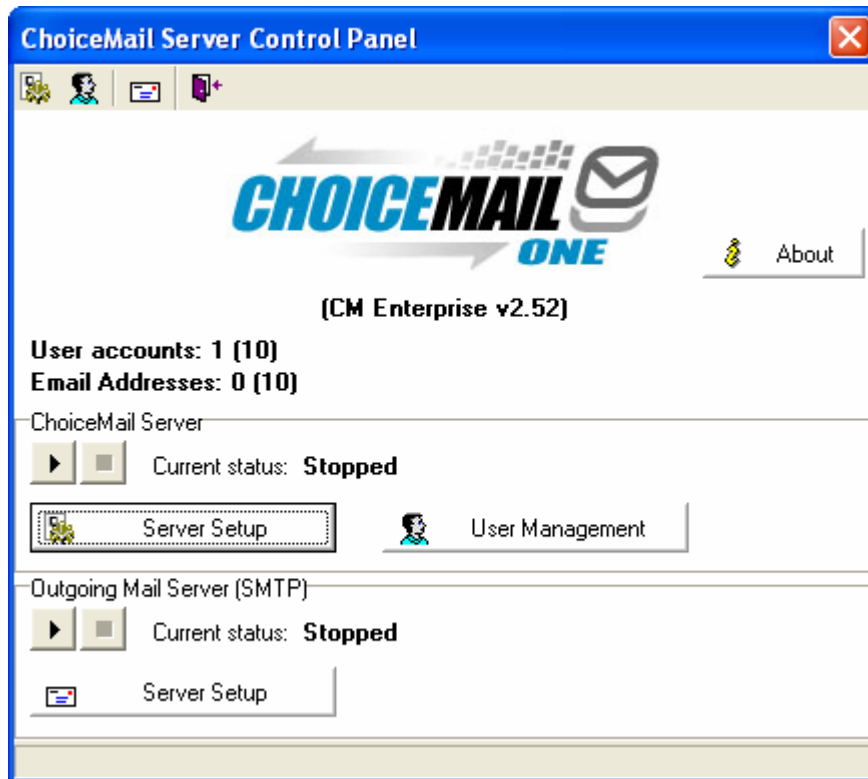


Instructions to set up Auto White Listing

In ChoiceMail:

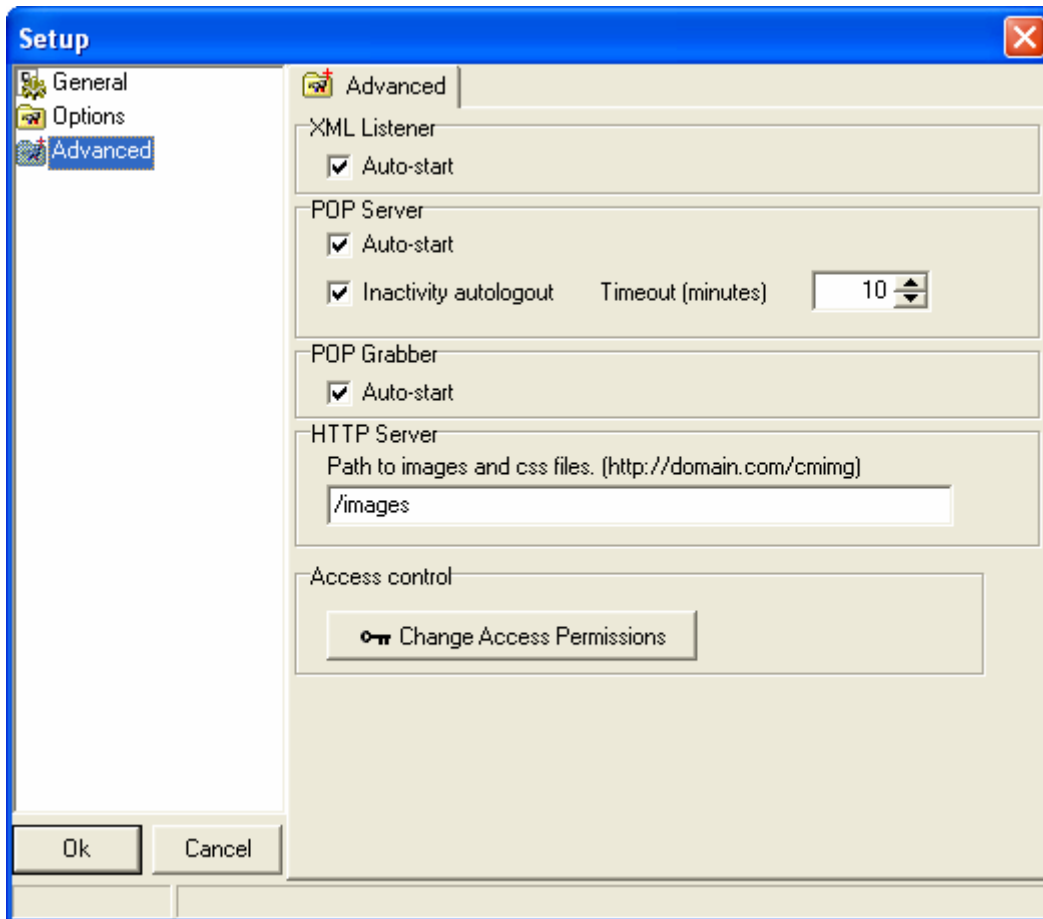
1. Bring up ChoiceMail's Control Panel



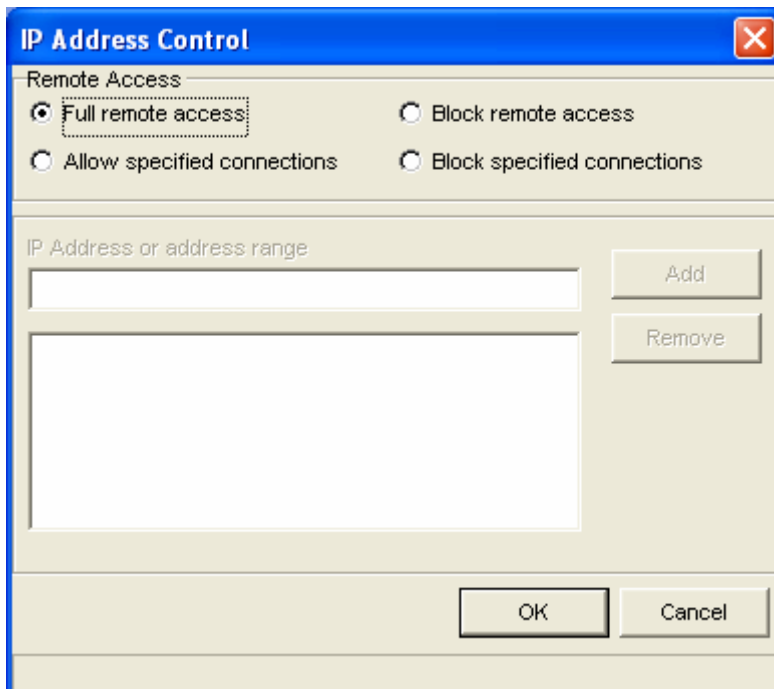
2. Stop both servers.

3. Click on ChoiceMail Server Setup

4. Click on Advanced



5. Click on 'Change Access Permission'



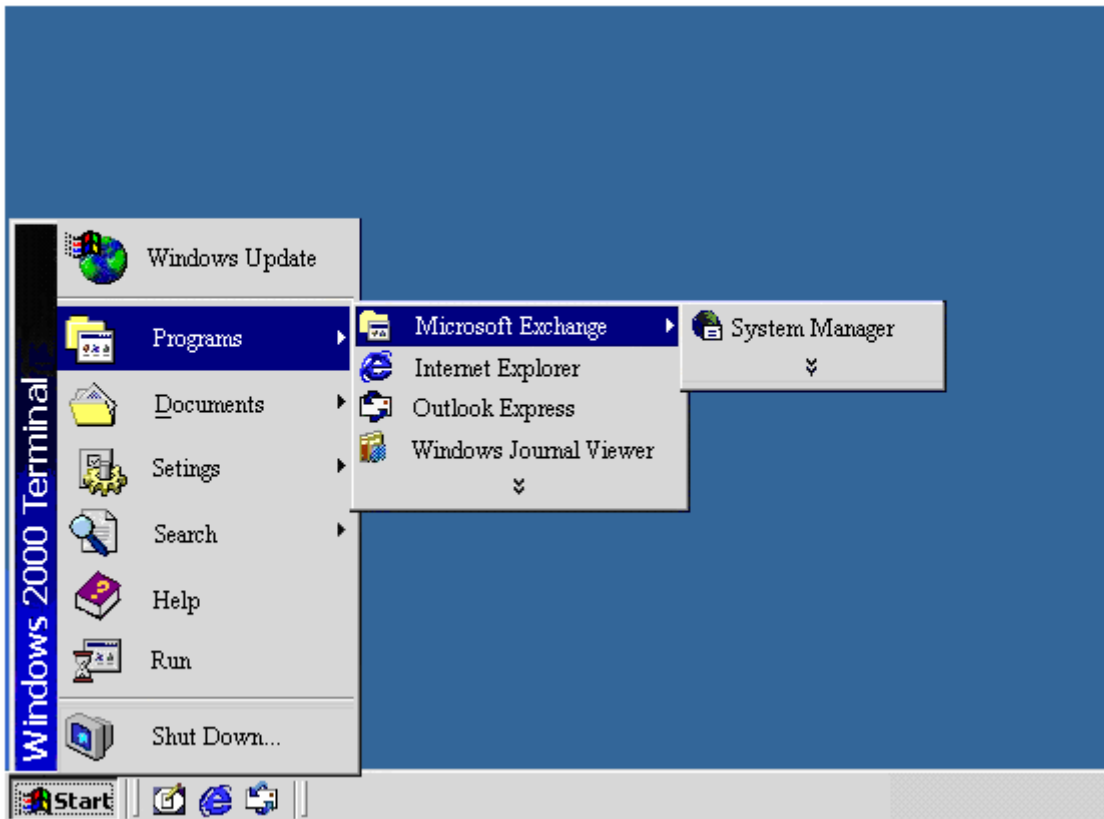
6. Set the remote access permission either to 'Full remote access' or preferably "Allow specified connections" and add the IP address of the machine on which Exchange is running.

7. Click OK all the way out and Start both the ChoiceMail Server and the Outgoing Mail Server (SMTP).

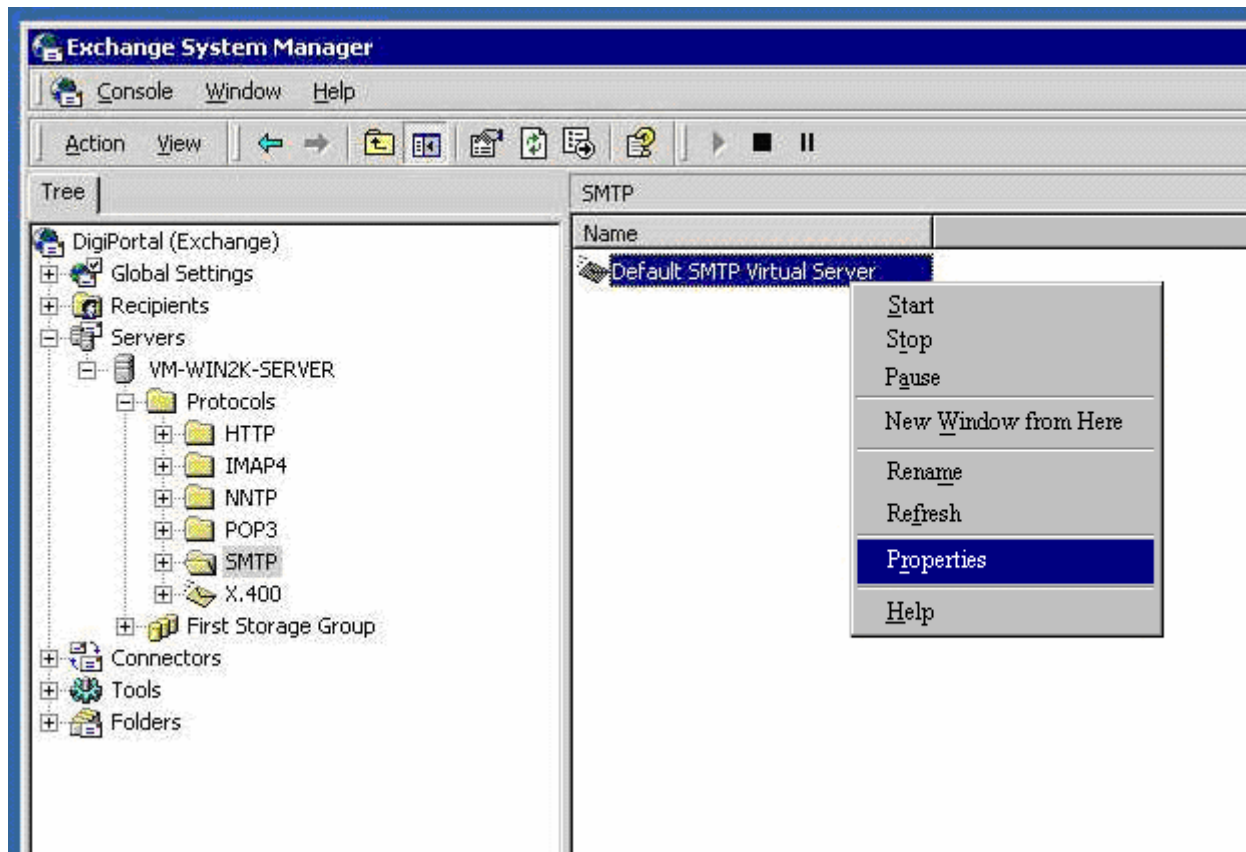
In Exchange:

Here are the instructions for setting up Auto White Listing if you are running Exchange 2000 or 2003.

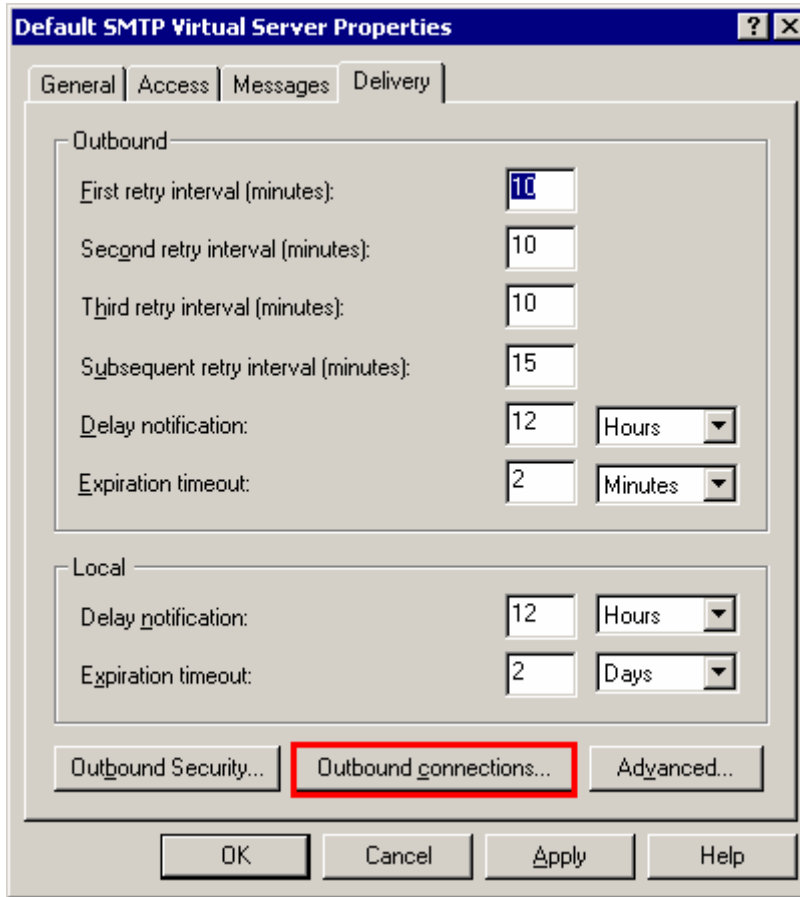
1. Open Microsoft Exchange System Manager.



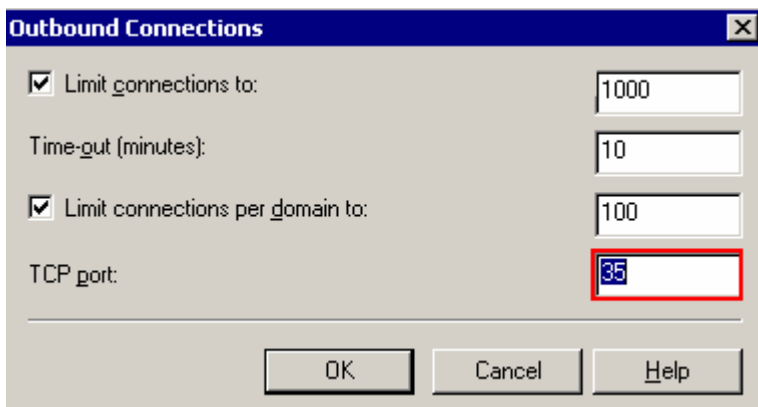
2. Click on the servers -> Expand to find the server that Exchange is on -> Expand that to find Protocols -> Expand that to find SMTP -> Click on the SMTP folder so that the Default SMTP Virtual Server is listed in the right hand pane -> Right click on it and select Properties.



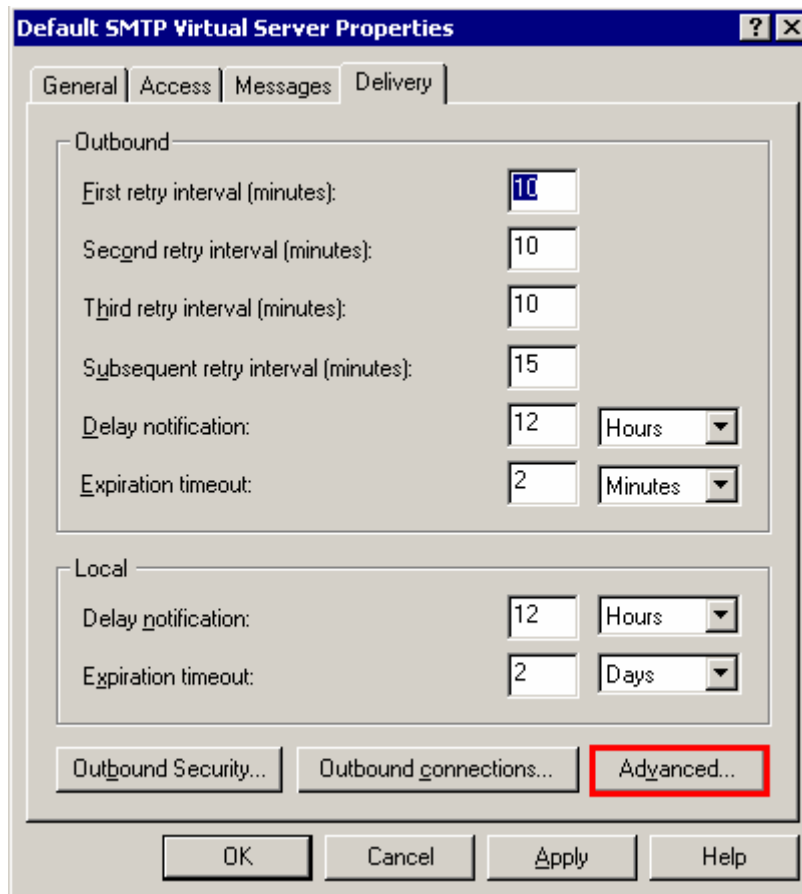
3. From the Default SMTP Virtual Server Properties screen click on the Delivery Tab.
4. Click on the Outbound Connections button at the bottom.



5. Change the TCP port to 35 and click OK



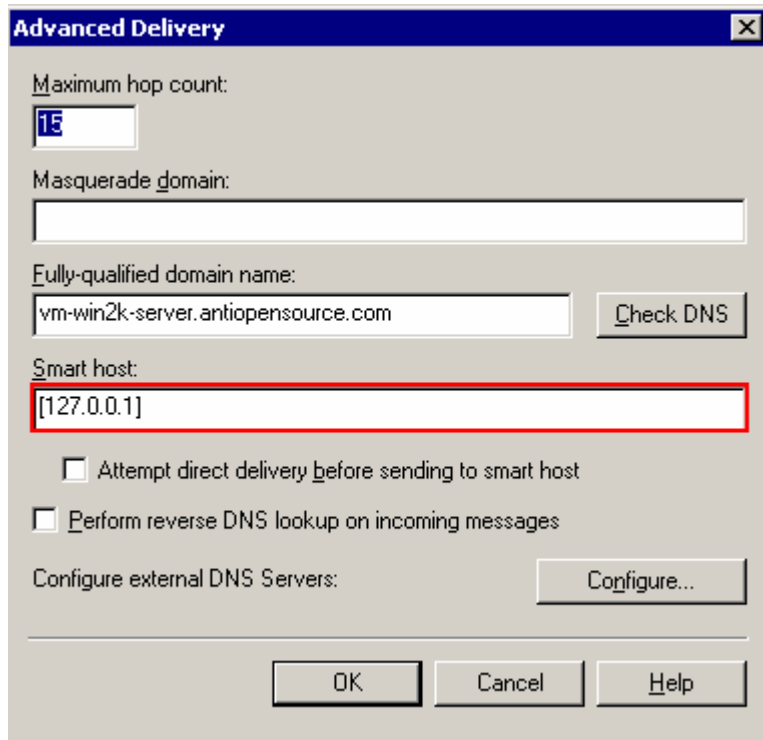
- From the Default SMTP Virtual Server Properties screen -> Delivery Tab, Click on the Advanced button.



7. The fully qualified domain name should already be there but if it is not then you need to add it. If you control your MX records it is probably mail.yourdomain.com. However if you are getting an email feed then it is probably your mail machine server name.yourdomain.com
8. If ChoiceMail is installed on the same server as your mail server, then the smart host IP address should be set to [127.0.0.1] (including the square brackets)

However, if ChoiceMail is running on a different machine, then you need to specify the IP address of that other machine within the square brackets.

9. Click OK



10. Continue to click OK on all dialogs until you are back to the Default SMTP Virtual Server.

11. Right click on the Default SMTP Virtual Server entry, but this time choose Stop from the popup menu. After it stops, right click again and choose Start.
12. Once it has started, Auto White Listing is now configured. You can close all windows that you have open.

